

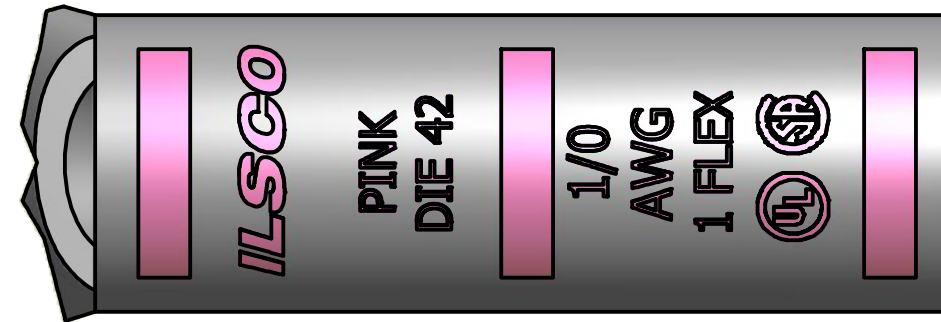
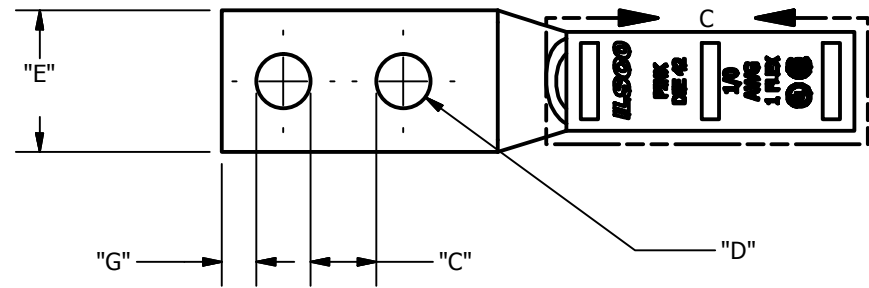
SCREW: NONE
 CAT. NO.: SEE CHART
 INFORMATION SHEET: FORM 157

MATERIAL: COPPER
 PLATING: EL-TIN
 MARKING: SEE CHART

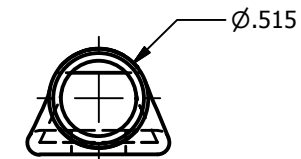
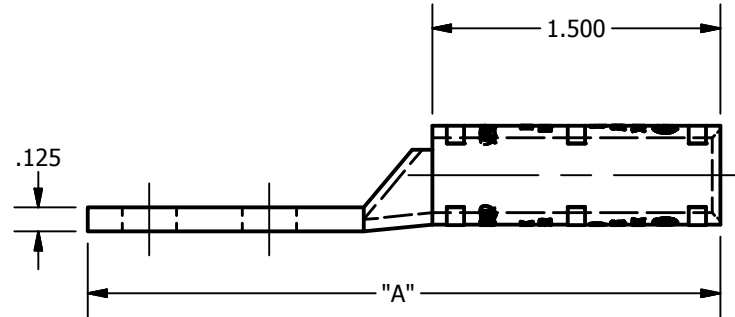
REV: I
 DRAWN BY: DW
 DATE: 7/19/2007
 SCALE: NTS
 SIZE: B



DWG NO: **Y0713-D**
 SHEET: 1 OF 1



DETAIL C
 TOP & BOTTOM INK MARKING



CATALOG NUMBER	"A"	"C"	"D"	"E"	"G"	TANG MARKING
CLWD-1/0-10-12	3.106	0.281	0.219	0.738	0.148	
CLWD-1/0-10-58	3.106	0.406	0.219	0.738	0.148	
CLWD-1/0-10-1116	3.106	0.468	0.219	0.738	0.148	
CLWD-1/0-10-34	3.293	0.531	0.219	0.738	0.148	
CLWD-1/0-10-1	3.543	0.781	0.219	0.738	0.148	
CLWD-1/0-14-12	3.106	0.219	0.281	0.738	0.180	
CLWD-1/0-14-58	3.293	0.344	0.281	0.738	0.180	ILSCO, CLWD-1/0-14-58, 1/4 X 5/8, DIE 42, 1/0 AWG, 1 FLEX, UL, CSA
CLWD-1/0-14-34	3.293	0.469	0.281	0.738	0.180	ILSCO, CLWD-1/0-14-34, 1/4 X 3/4, 1/0 AWG, 1 FLEX, DIE 42, UL, CSA
CLWD-1/0-14-1	3.543	0.719	0.281	0.738	0.180	ILSCO, CLWD-1/0-14-1, 1/4 X 1, 1/0 AWG, 1 FLEX, DIE 42, UL, CSA
CLWD-1/0-516-58	3.293	0.282	0.343	0.738	0.180	
CLWD-1/0-516-34	3.543	0.407	0.343	0.738	0.180	ILSCO, C-1/0-516-34, 1/0 AWG, 1 FLEX, DIE 42, UL, CSA
CLWD-1/0-516-78	3.543	0.532	0.343	0.738	0.180	ILSCO, CLWD-1/0-516-78, 5/16 X 7/8, 1/0 AWG, 1 FLEX, DIE 42, UL, CSA
CLWD-1/0-516-1	3.793	0.657	0.343	0.738	0.180	ILSCO, C-1/0-516-1, 5/16 X 1, 1/0 AWG, 1 FLEX, DIE 42, UL, CSA
CLWD-1/0-516-134	4.356	1.407	0.343	0.738	0.180	
CLWD-1/0-38-34	3.543	0.344	0.406	0.738	0.211	ILSCO, C-1/0-38-34, 3/8 X 3/4, 1/0 AWG, 1 FLEX, DIE 42, UL, CSA
CLWD-1/0-38-78	3.793	0.469	0.406	0.738	0.211	
CLWD-1/0-38-1	3.793	0.594	0.406	0.738	0.211	ILSCO, C-1/0-38-1, 3/8 X 1, 1/0 AWG, 1 FLEX, DIE 42, UL, CSA
CLWD-1/0-38-116	3.793	0.656	0.406	0.738	0.211	
CLWD-1/0-38-118	3.981	0.719	0.406	0.738	0.211	
CLWD-1/0-38-134	4.481	1.344	0.406	0.738	0.211	ILSCO, CLWD-1/0-38-134, 3/8 X 1-3/4, DIE 42, 1/0 AWG, 1 FLEX, UL, CSA
CLWD-1/0-38-2	4.856	1.594	0.406	0.738	0.211	
CLWD-1/0-12-1	3.981	0.438	0.562	0.738	0.265	ILSCO, CLWD-1/0-12-1, 1/2 X 1, 1/0 AWG, 1 FLEX, DIE 42, UL, CSA
CLWD-1/0-12-114	4.356	0.688	0.562	0.738	0.265	
CLWD-1/0-12-112	4.481	0.938	0.562	0.738	0.265	
CLWD-1/0-12-134	4.856	1.188	0.562	0.738	0.265	ILSCO, C-1/0-12-134, 1/2 X 1-3/4, 1/0 AWG, 1 FLEX, DIE 42, UL, CSA
CLWD-1/0-12-178	4.856	1.313	0.562	0.738	0.265	